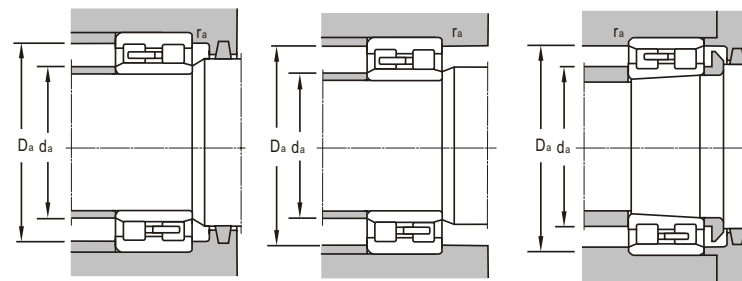
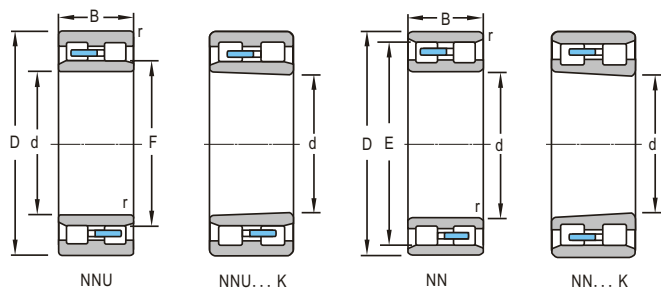


d 40~140mm

d	Boundary Dimensions			Basic Load Ratings		Limiting Speeds	
	D	B	r _{min}	Dynamic C	Static C ₀	Grease	Oil
mm				kN		r/min	
40	68	37	0.6	82.1	121	2000	
	68	38	0.6	100	142	2000	
	68	38	1.5	99.6	141	4800	6000
50	80	23	1	53	73.2	8000	9400
55	90	45	0.6	144	228	1500	
60	95	26	1.1	70.2	105	8500	10000
	95	26	1.1	70.2	105	8500	10000
70	110	30	1.1	95.8	145	7000	8500
	110	30	1.1	95.8	145	7000	8500
75	115	30	1.1	101	158	6700	8000
	115	30	1.1	101	158	6700	8000
80	125	34	1.1	123	194	6300	7500
	125	34	1.1	123	194	6300	7500
	125	34	1.1	123	194	6300	7500
85	130	34	1.1	122	195	6000	7000
90	140	37	1.5	142	226	5600	6700
	140	66	0.6	297	560	900	
100	150	37	1.5	161	274	5300	6000
	150	66	1.5	320	585	850	
105	160	41	2	201	328	4800	5600
110	170	80	1.8	389	711	570	750
	200	69.8	2.1	372	592	3100	3900
120	180	46	2	235	397	4300	5000
	180	79	1.8	406	765	530	700
130	200	52	2	294	498	4000	4500
	200	52	2	294	498	4000	4500
140	210	53	2	308	539	3800	4300

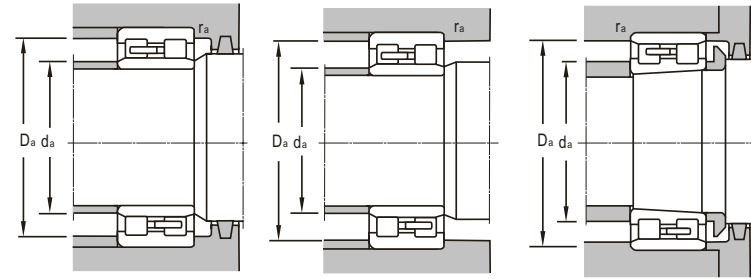
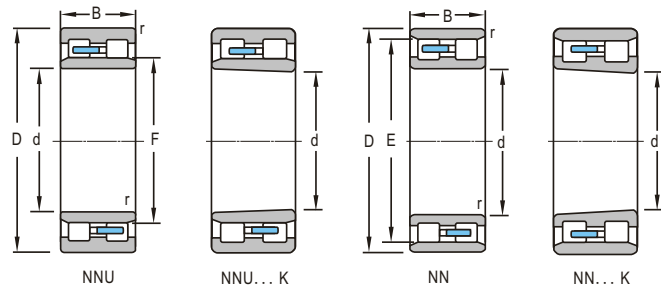
Bearing Designations		Journal	Other Dimensions		Mounting Dimensions					Mass
Present	Original		F	E	d _{amin}	d _{amax}	D _{amax}	D _{amin}	r _{amax}	
		mm	mm		mm					kg
NNF5008-2LSNV		40	47	61	44	50	65	63	0.6	0.535
NNF5008DA.V_C4.S3		40	46	62	44	50	65	63	0.6	0.524
NNCF5008V/P54 S3		40		61.74	44.6	45.9	63.4	68	1	0.545
NN 3010 K	3182110	50		72.5	55		75	74	1	0.421
NNF5011-2LS		55	63.5	81.5	60	67	85	83	0.6	1.16
NN 3012K		60		85.5	66.5		88.5	87	1	0.707
NN 3012		60		85.5	66.5		88.5	87	1	0.708
NN 3014K		70		100	76.5		103.5	101		0.963
NN3014K/ P4W 33		70		100	76.5		103.5	101	1	1.04
NN 3015K		75		105	81.5		108.5	106	1	1.12
NN 3015		75		105	81.5		108.5	106	1	1.13
NN 3016K		80		113	86.5		118.5	114	1	1.54
Nn3016		80		113	86.5		118.5	114	1	1.6
NN 3016K/ P4W 33		80		113	86.5		118.5	114	1	1.5
NN 3017K		85		118	91.5		123.5	119	1	1.59
NN 3018K		90		127	98		132	129	1.5	2.12
NNF5018-2LSNV		90	103.5	127.5	96	106	135	130	0.6	3.24
NN 3020 K		100		137	108		142	139	1.5	2.31
NNF5020-2LSV/Y A1		100	113	139	105	117	146	141	1.5	3.98
NN 3021K	3282222	105		146	115		150	148	2	2.99
NNF5022-2LSNV		110		154.5	117	125	165	160	1	5.37
NN 3222		110		178.5	139		182	180	2	9.52
NN 3024K		120		165	130		170	167	2	3.99
NNF5024-2LSNV		120		164	127	134	175	170	1	6.81
NN 3026K		130		182	140		190	183	2	5.76
NN 3026K/ W33		130		182	140		190	183	2	5.76
NN 3028 K		140		192	150		200	194	2	6.43



d 140~280mm

Boundary Dimensions				Basic Load Ratings		Limiting Speeds	
<i>d</i>	<i>D</i>	<i>B</i>	<i>r_{min}</i>	Dynamic <i>C</i>	Static <i>C₀</i>	Grease	Oil
mm				kN		r/min	
140	210	53	2	308	539	3800	4300
150	225	56	2.1	335	587	3600	4000
160	240	60	2.1	446	776	3400	3800
	240	60	2.1	446	776	3400	3800
	262	108	2	784	1600	380	500
170	260	67	2.1	450	805	3000	3400
180	260	84	2.1	567	1130	2000	2600
	270	120	2.1	815	1570	2000	2600
190	260	69	2	485	1060	1900	2400
	260	69	2	485	1060	2000	2600
200	280	80	2.1	480	1040	1900	2400
	280	80	2.1	480	1040	1900	2400
	310	82	2.1	653	1170	2400	2800
	310	82	2.1	653	1170	2400	2800
220	340	90	3	815	1480	2200	2600
	340	90	3	815	1480	2200	2600
	340	90	3	815	1480	2200	2600
240	300	60	2	446	1180	1100	1400
	320	80	2.1	546	1270	1700	2000
	360	92	3	892	1610	1600	1900
	360	92	3	892	1610	1600	1900
	400	160	4	1900	3600	1600	1400
260	360	100	2.1	785	1800	1400	1700
	360	100	2.1	785	1800	1400	1700
	360	100	2.1	785	1800	1400	1700
	400	104	4	1030	1920	1500	1700
	400	104	4	1030	1920	1500	1700
	400	189	1.1	2400	4720	330	
	400	189	1.1	2400	4720	330	
	440	180	5	2370	4270	1000	1300
280	380	100	2.1	760	1800	1300	1600

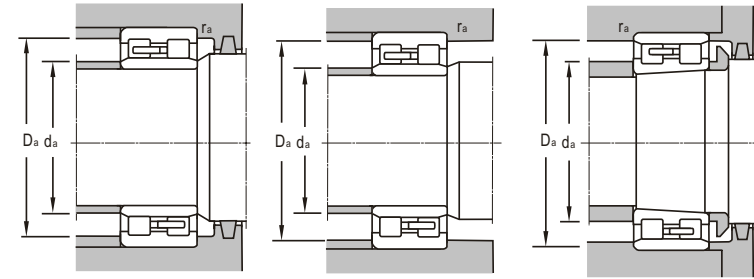
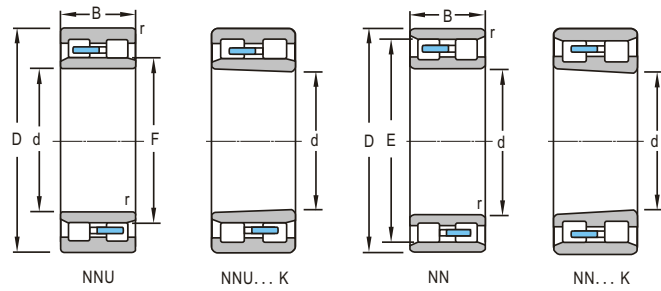
Bearing Designations		Journal	Other Dimensions		Mounting Dimensions					Mass
Present	Original		<i>F</i>	<i>E</i>	<i>d_{amin}</i>	<i>d_{amax}</i>	<i>D_{amax}</i>	<i>D_{amin}</i>	<i>r_{amax}</i>	
		mm	mm		mm					kg
NN 3028		140		192	150		200	194	2	6.56
NN3030K		150		206	161		214	208	2	7.87
NN3032K		160		223	171		229	221	2	9.25
NN3032K/ W33		160		223	171		229	221	2	9.18
NNF5032-2LSNRV		160		222.6	167	184	235	229	2	17.2
NN3034K		170		236	180		249	238	2	12.8
NNU4936X3/ W33		180	202		190		249	238	2	15
NNU4136X3		180	202		190	199	259	248	2	24
NNU 4938 K	438293 8	190	211		200	209	250	246	2	10.96
NNU4938K/P5W33YA		190	211.5		199	211	251	242	2	10.9
NN 4940K	418294 0	200		259	211	222	269	264	2	14.1
NN 4940 K/W33	418294 0Y	200		259	211	222	269	264	2	14.1
NN3040K		200		282	211		299	285	2	22.6
NN3040K/ W33		200		282	211		299	285	2	22.6
NN3044		220		310	230		327	313	2	30.1
NN3044K/ W33		220		310	230		327	313	2	29.1
NNU3044K/ W33		220	254		230		327	313	2	29.2
NNC4848V	448274 8H	240	253.5	279.5	247.5	255	290	287		
NNU4948		240	265		251	262	309		2	18.1
NN 3048		240		330	253		347	333	2.5	32.3
NN 3048K/ W33		240		330	253		347	333	2.5	32
NNU 4148M		240	282		256	278	384		3	81.8
NN 4952 K		260		334	271	288	349		2	30.2
NNU 4952/ C4W 33-1		260	292		271	288	349		2	31.7
NNU4952/ C3W 33-1		260	292		272	288	349		2	31.7
NN 3052 K	318215 2	260		364	276		384	367	3	44.3
NN 3052	328215 2	260		364	276		384	367	3	47.1
NNF5052- 2LSNV /W33		260	292.5	372.5	276	298	385	368	3	80.2
NNF5052- 2LSNV /C9W 33		260	292.5	372.5	276	298	385	368	1.1	80.2
NNU4152/W33		260	306		276	300	424	407	3	112
NNU4956		280	312		291	308	369		2	33.6



d 280~400mm

d	Boundary Dimensions			Basic Load Ratings		Limiting Speeds	
	D	B	r _{min}	Dynamic C	Static C ₀	Grease	Oil
	mm			kN		r/min	
280	420	106	4	1110	2160	1800	2000
	420	106	4	1110	2160	1800	2000
	420	106	4	1110	2160	1800	2000
	460	180	5	2400	4250	950	1200
300	460	118	4	1280	2430	1700	1900
	460	118	4	1280	2430	1700	1900
	460	118	4	1280	2430	1700	1900
	460	118	4	1280	2430	1700	1900
	460	118	4	1580	3200	320	600
	460	118	4	1580	3200	320	600
320	440	118	3	1110	2640	1100	1400
	440	118	3	1110	2640	1100	1400
	440	118	3	1110	2640	1100	1400
	480	121	4	1300	2600	1600	1800
	480	121	4	1570	2970	920	1200
340	460	118	3	1270	3250	1100	1300
	520	133	5	1670	3300	1100	1300
	520	133	5	1670	3300	1100	1300
	520	133	5	1912	4084	550	610
360	480	118	3	1270	3250	1100	1300
	540	134	5	1630	3240	1000	1200
380	540	180	4	2500	5690	900	1050
	540	180	4	2880	6630	900	1050
	560	135	5	1690	3450	940	1100
	560	135	5	1690	3450	940	1100
	560	135	5	1690	3450	940	1100
	620	194	5	2700	5800	500	700
400	540	106	4	1240	2400	780	980
	540	106	4	1240	2400	780	980
	540	106	4	1240	2400	780	980
	600	148	5	2140	4420	1200	1400
	600	148	5	2140	4420	1200	1400
	600	148	5	2140	4420	1200	1400
	600	148	5	2140	4420	1200	1400
	600	148	5	2140	4420	1200	1400
	650	250	6	4610	8970	710	890

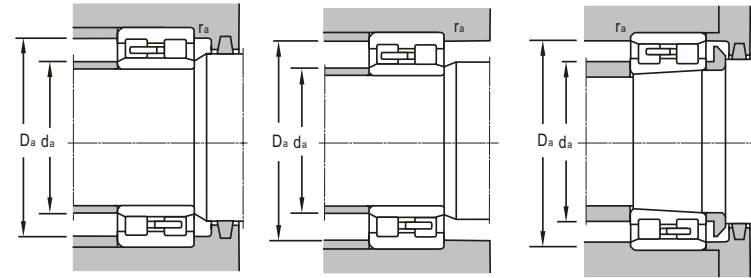
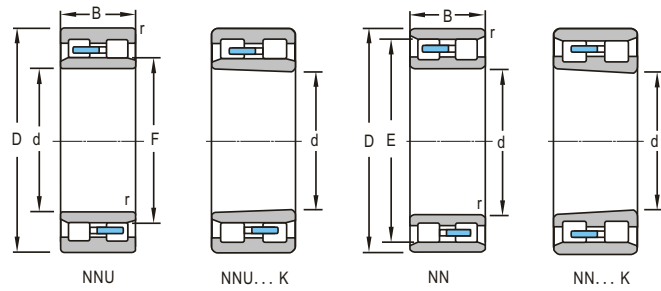
Bearing Designations		Journal	Other Dimensions		Mounting Dimensions					Mass
Present	Original		F	E	d _{amin}	d _{amax}	D _{amax}	D _{amin}	r _{amax}	
		mm	mm		mm					kg
NN 3056 K		280	384		296		404	387	3	49.1
NN 3056		280	384		296		404	387	3	49.9
NN3056K/ W33		280	384		296		404	387	3	48.9
NNU4156		280	326		300	318	440		4	120
NN 3060		300	418		316		444	421	3	71.5
NN 3060/ W33		300	418		316		444	421	3	71.1
NN 3060 K		300	418		316		444	421	3	69.8
NN3060K/ W33		300	418		316		444	421	3	69.4
NNF3060V/ W33		300	346	418	316		444	421	3	69.8
NNCF3060V		300	346	418			444	421	3	69.8
NN 4964 K/ W33	4182 964Y	320		409	334	355	427		2.5	52
NNU 4964 K/ W33		320	359		334	355	427		2.5	54.7
NNU 4964 K/ P5W33		320	359		334	355	427		2.5	54.7
NN 3064 K	3182 164	320		438	336		464	442	3	77.9
NNU3064/ W33		320	366		336	343	464	400	3	76.4
NN 4968 K/ W33	4182 968Y	340		433	353	375	447		2.5	53.8
NN 3068 K	3182 168	340		473	360		500	477	4	101
NN 3068	3282 168	340		473	360		500	477	4	104
NN3068V	3682 168U	340		473	360		500	477	4	100
NNU4972K		360	396		374	395	466		2.5	57.8
NN 3072 K	3182 172	360		493	380		520	497	4	106
NNU4076X1/ W33XYA3		380	420		400	418	520		4	132
LY-N025		380	420		400	418	520		4	132
NN 3076		380		515	400		540	516	3.5	114
NN3076K		380		515	400		540	516	4	110
NN3076K/ W33X		380		515	400		540	516	4	110
NN 3176 V	3202 776	380		560	458		560	534	4	221
NN3980K	3182 980	400		505	430		510	486	3	71.3
NN 3980 K/ W33	3182 980Y	400		505	430		510	486	3	71.3
NN 3980 K/ W33	3282 980	400		505	430		510	486	3	73.6
NN 3080 K		400		549	420		580	533	4	149
NN3080K/ W33		400		549	420		580	533	4	149
NN 3080		400		549	420		580	533	4	150
NN3080/ W33		400		549	420		580	533	4	150
NNU 4180 M/ HC/ C3		400	463		424	455	626		5	319



d 420--600mm

d	Boundary Dimensions			Basic Load Ratings		Limiting Speeds		
	D	B	r _{min}	Dynamic C	Static C ₀	Grease	Oil	
mm								
420	620	150	5	2170	4560	1000	1300	
	620	200	5	3230	6850	740	920	
	760	280	7.5	6000	11300	510	640	
440	640	230	5	4340	9180	700	850	
460	620	160	4	2230	5210	800	950	
	620	160	4	2230	5210	800	950	
	680	163	6	2590	5470	750	890	
	680	163	6	2590	5470	750	890	
	680	163	6	2590	5470	750	890	
800	250	7.5	5830	11200	560	700		
480	700	165	6	2642	5680	700	850	
500	670	170	5	2360	6200	700	850	
	670	170	5	2570	6440	700	850	
	720	167	6	2840	6140	950	1100	
	830	325	7.5	7090	14400	460	600	
530	710	136	5	2270	5130	670	800	
	710	180	5	2820	7690	670	800	
	760	260	6	5353	12834	600	700	
	870	335	7.5	7800	15900	510	640	
560	735	170	5	3030	7560	560	730	
	750	140	5	2370	4860	670	800	
	750	140	5	2450	5780	800	1000	
	750	190	5	3480	8660	670	800	
	780	180	6	3600	8270	600	700	
	780	180	5	3600	8270	600	700	
	820	195	6	3620	7890	560	670	
	820	195	6	3620	7890	560	670	
	820	195	6	3620	7890	560	670	
	600	800	200	5	3350	9320	700	900
		800	200	5	3580	10200	560	670
820		287.5	5	6080	16600	530	630	
870		270	6	6450	15500	500	600	
980		375	7.5	9950	21000	370	480	

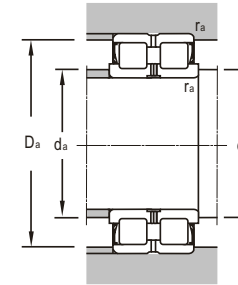
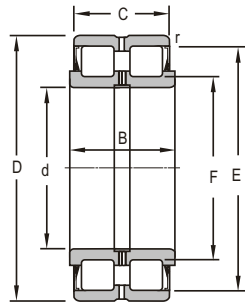
Bearing Designations		Journal	Other Dimensions		Mounting Dimensions					Mass
Present	Original		F	E	d _{amin}	d _{amax}	D _{amax}	D _{amin}	r _{amax}	
		mm	mm		mm					kg
NN3084K		420		569	440	477	600	588	4	151
NNU 4084/W33/C3		420	469		440	463	601		4	204
NNU 4184 X1/HC/P6		420	508		448	499	732		6	587
NNU6/400/HC		440	482		466	475	614		5	250
NNU 4992/W33		460	504		476	504	604		3	
NNU 4992K/W33		460	504		476	504	604		3	
NN 3092 K		460		623	484		656	627	5	204
NN 3092		460		623	484		656	627	5	204
NN3092/W33		460		623	484		656	627	5	204
NNU 3192 X3/HC W33		460	554		489	554	771		6	550
NN3096K/W33		480		643	506		674	648	5	214
NNU 49/500/YA	44829/500	500	548		520	548	650		4	166
NNU 49/500K/W33		500	551		520	548	650		4	169
NN30/500K/W33		500		664	526		694	668		223
NNU41/500/HC		500	582		533	568	587	797	6	710
NN39/530K		530		663	550	582	690		4	149
NN 49/530 K/P4W33		530			549	580	691	673	4	203
NNU6/530/W33XYA3		530	587		550		740		5	387
NNU 41/530 M/HC W33		530	618		580	608	842		6	781
NNU19/560X1/HCW33		560	603		580	590	715	695	5	190
NN 39/560	32829/560	560		705	576		735	711	4	188
NN39/560K		560		705	590	623	725	715	5	172
NNU 49/560/SPC3W33X		560	617		580	644	730		4	234
NN 6/560	2827/560	560		725	580		765	732	5	266
NN6/560KW/W33		560		725	580		765	732	4	257
NN 30/560 KF1	31821/560 W	560		755	600		794	765	5	341
NN30/560KF1/W33		560		755	600		794	765	5	336
NN30/560F1/W33		560		755	600		794	765	5	347
NN49/600K		600		750	630	662.8	770	760	5	281
NN 49/600 K	41829/600	600		755	620	662	780		4	257
NNU6/600/HC		600	660		620	651	805		5	470
NNU40/600X2		600	672		626	653	844		6	559
NNU41/600M/W33		600	699		633	682	947	898	6	1117



d 650--900mm

d	Boundary Dimensions			Basic Load Ratings		Limiting Speeds	
	D	B	r _{min}	Dynamic C	Static C ₀	Grease	Oil
mm				kN		r/min	
650	900	128	6	3750	8250	270	330
670	980	230	7.5	4890	10400	670	750
750	920	170	5	3380	10000	360	450
900	1180	280	5	6600	20000	170	210

Bearing Designations		Journal	Other Dimensions		Mounting Dimensions					Mass
Present	Original		F	E	d _{amin}	d _{amax}	D _{amax}	D _{amin}	r _{amax}	
		mm	mm		mm					kg
NCF6/650V/P59		650	841.5		680	720	880	836	5	247
NN 30/670 Kf1	31821/670 W	670	900		704		946	907	6	597
NN 48/750/P69W33		750	879		770		900	885	4	240
NNU49/900C3W33X		900	986		926	977	1154	1110	4	805



d 40~260mm

Boundary Dimensions					Basic Load Ratings		Limiting Speeds		Mass
<i>d</i>	<i>D</i>	<i>B</i>	<i>C</i>	<i>r_{min}</i>	Dynamic <i>C</i>	Static <i>C₀</i>	Grease	Oil	
mm					kN		r/min		
40	68	37	38	0.6	82.1	121	2000		0.535
	68	38	38	0.6	100	142	2000		
55	90	45	46	0.6	144	228	1500		1.16
85	130	59		0.6	248	459	930		2.79
90	140	66	67	0.6	297	560	900		3.24
	140	66		0.6	319	580	900		
100	150	66	67	1.5	320	585	850		3.71
110	170	79		0.6	389	711	800		7
120	180	79		0.6	406	765	750		7.5
140	210	94		0.6	608	1150	650		12.1
160	240	108	109	0.6	800	1590	500		17.3
170	230	80		1	544	1147	450		9.09
260	400	189	190	1.1	2400	4720	330		80.2
	400	189	190	1.1	2400	4720	330		

Bearing Designations		Journal	Other Dimensions							Mass	
Present	Original		<i>F</i>	<i>E</i>	<i>d_{amin}</i>	<i>d_{amax}</i>	<i>d_{bmin}</i>	<i>D_{amax}</i>	<i>D_{amin}</i>		<i>r_{amax}</i>
		mm	mm							kg	
NNF5008-2LSNV		40	47	61	44	50	60	65	63	0.6	0.535
NNF5008DA.V.C4.S3		40	46	62	44	50	60	65	63	0.6	0.524
NNF5011-2LS		55	63.5	81.5	60	67	77	85	83	0.6	1.16
NNF5017-2LSNRV		85	98.2	120.2	91	102	125	123	0.6		2.79
NNF5018-2LSNV		90	103.5	127.5	96	106	124	135	130	0.6	3.24
NNF5018-2LSNRV		90	103.5	127.5	96	106	135	130	0.6		3.71
NNF5020-2LSV/YA1		100	113	139	105	117	130	146	141	1.5	3.98
NNF5022-2LSNRV		110	124.5	154.5	116	129	165	158	0.6		7
NNF5024-2LSNRV		120	134	164	126	138	175	168	0.6		7.5
NNF5028-2LSNRV		140	157.5	195.5	146	163	205	199	0.6		12.1
NNF5032-2LSNV/W33		160	180.6	222.6	165	189	210	234	226	0.6	17.3
NNF170-2RV		170	184	218	176	185	225	221	1		9.09
NNF5052-2LSNV/W33		260	292.5	372.5	276	298	305	385	368	3	80.2
NNF5052-2LSNV/C9W33		260	292.5	372.5	276	298	305	385	368	1.1	80.2